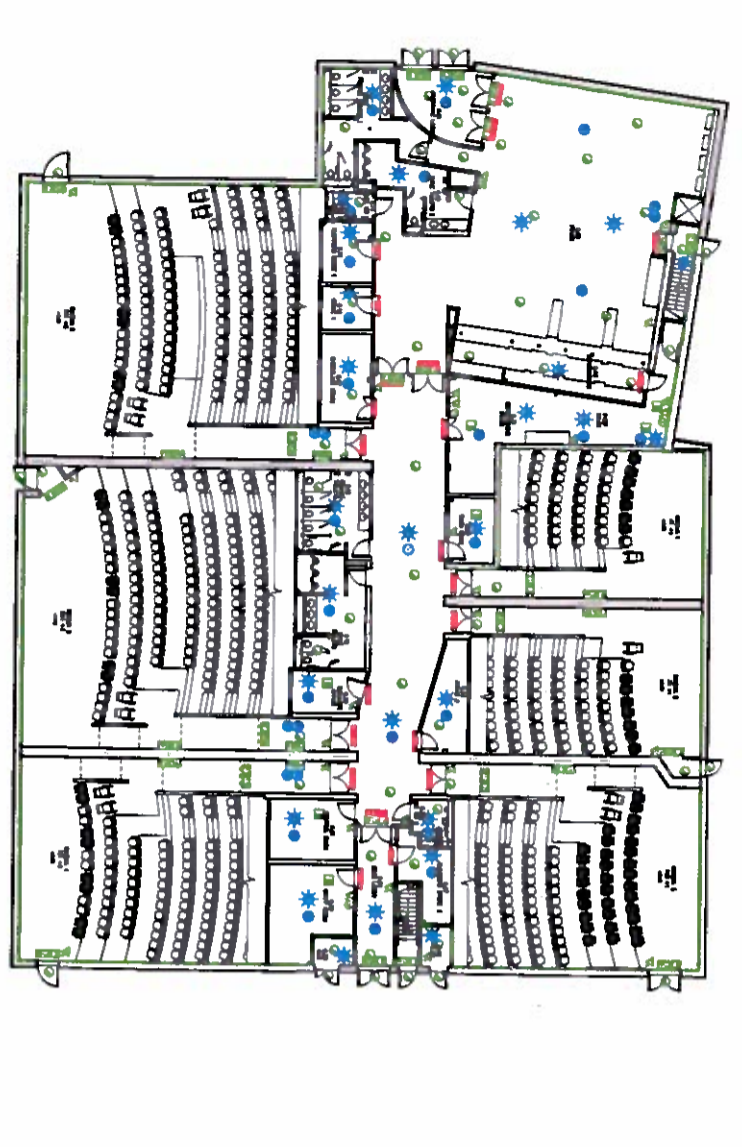


Copyright
 This drawing is the copyright of McFarlane Latter Limited. No part of this drawing may be reproduced, stored in a retrieval system or transmitted in any form or by any means, electronic, mechanical, photocopying, recording or otherwise, without the prior written consent of McFarlane Latter Limited.
 3 Clarendon Street, London W1S 2JF, UK

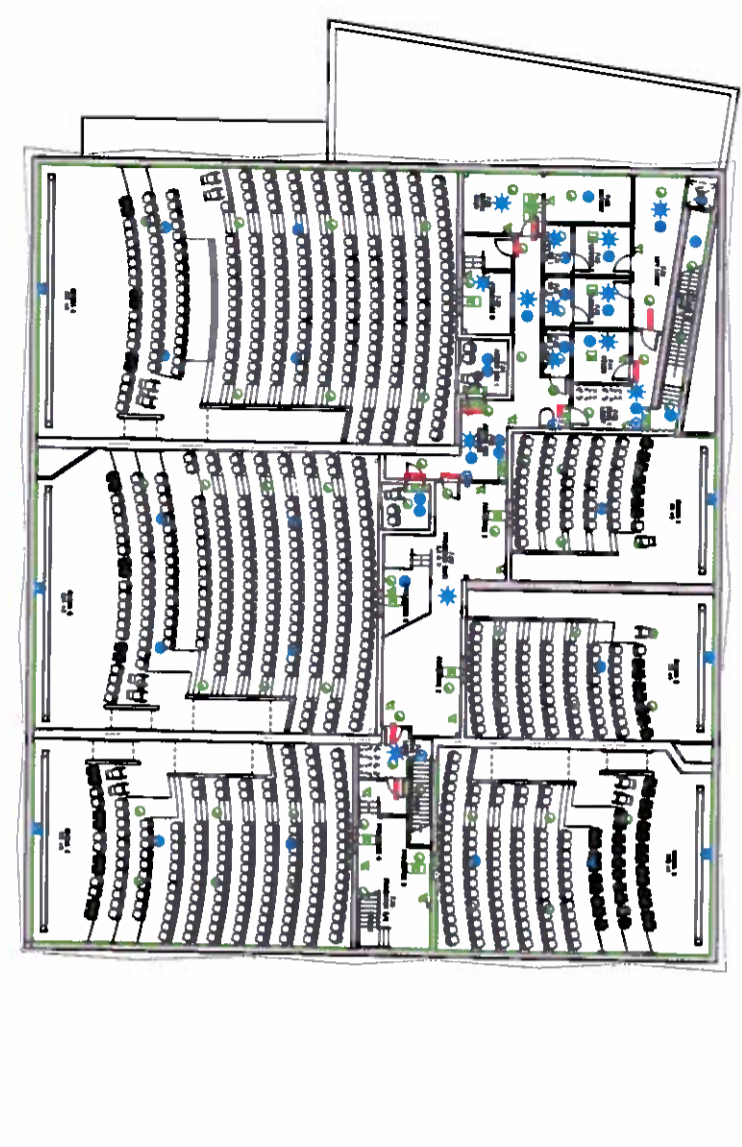
- Notes**
- No responsibility will be accepted for the presentation or accuracy of information reproduced from electronic data exchange.
 - The electrical installation is to comply with the latest edition of the BS Regulations and current amendments.
 - The contractor is responsible for the completion of the work in accordance with the drawings. Responsibility for the safety of the work is to be shared on site.
 - Do not connect any equipment to the system until it has been checked on site.

- CINEMA COMPLEX FIRE ZONES**
- SCHEDULE OF SEATING:**
- Auditorium 1 = 55 Seats & 1 Permanent Accessible Seat
 - Auditorium 2 = 120 Seats & 2 Permanent Accessible Seats
 - Auditorium 3 = 157 Seats & 2 Permanent Accessible Seats
 - Auditorium 4 = 224 Seats & 3 Permanent Accessible Seats
 - Auditorium 5 = 233 Seats & 3 Permanent Accessible Seats
- Total Seating = 689 Seats & 14 Permanent Accessible Seats**
- NOTES:**
- Refer to drawing CN-SW 801 for further details of cabling types and internal battery systems.
 - Cable trays to be installed at maximum 20m centres with sagging cables.
 - Undercoat cables are to be at a constant level above the floor.
 - Sloped cableage to be provided to undercoat cables where this can not be achieved.
- C&M NOTES:**
- Refer to drawing CN-SW 802 for further information on cleaning and maintenance and residual risk.

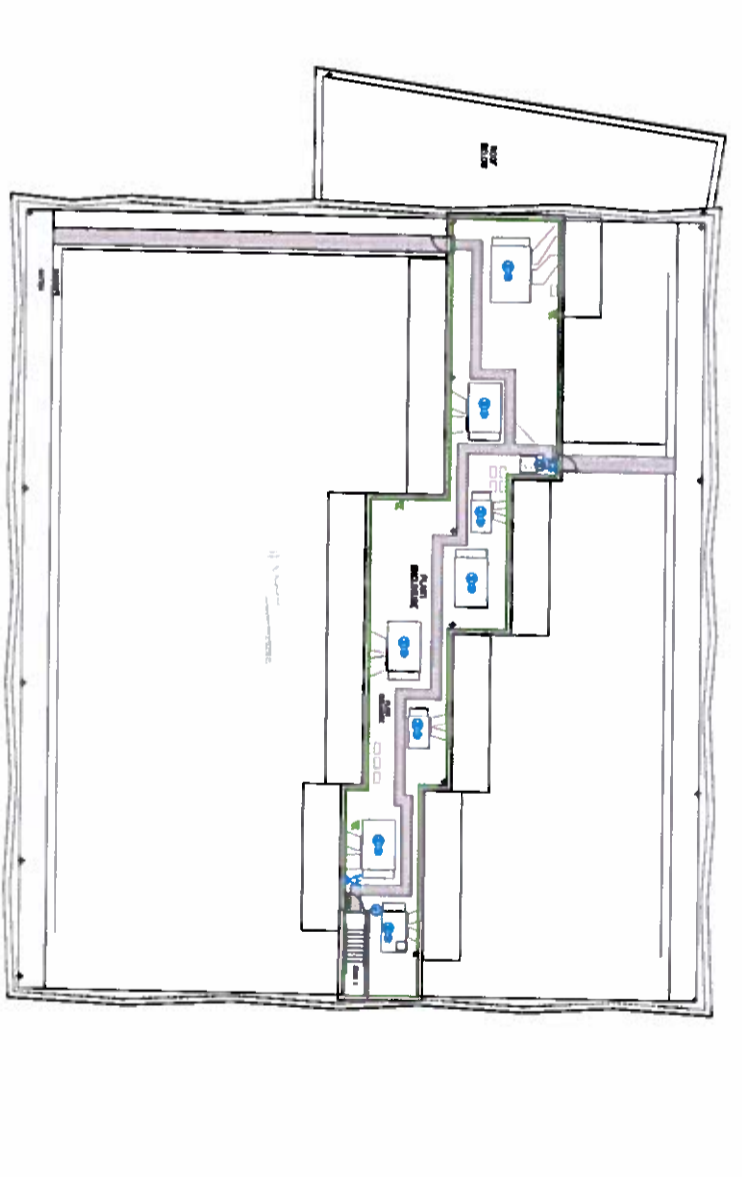
- LICENSING KEY**
- Red outline = Fire alarm zone
 - Blue outline = Fire alarm zone
 - Green outline = Fire alarm zone
- FIRE DOOR RATING**
- FD30 1/2 Hour fire door (self-closing)
 - FD60 1 Hour fire door (self-closing)
 - FD90 1 Hour fire door (self-closing)
- PORTABLE FIRE FIGHTING EQUIPMENT**
- PF1 Fire extinguisher, foam type, 5kg
 - PF2 Fire extinguisher, carbon dioxide type, 3kg
 - PF3 Dry Powder in box & generator, halon type, 5kg
 - PF4 Fire blanket (1.5 sqm)
- FIRE ALARM PANEL**
- FAP1 Fire alarm control unit
 - FAP2 Fire alarm panel
 - FAP3 Fire alarm smoke pump
 - FAP4 Fire alarm interface unit
- FIXED FIRE FIGHTING EQUIPMENT**
- FF1 Fire alarm control unit
 - FF2 Fire alarm panel
 - FF3 Fire alarm smoke pump
 - FF4 Fire alarm interface unit
- WIRELESS EQUIPMENT**
- WE1 Smoke/beam
 - WE2 Dual Probe Smoke Detector
 - WE3 Combined Beams / Smoke
- FIXED FIRE FIGHTING EQUIPMENT**
- FF1 Heat detector
 - FF2 Smoke detector - Optical type
 - FF3 Manual call point
- OTHER**
- EM1 Emergency luminaires
 - EM2 Manual fire call sign
 - EM3 Manual fire call sign - Directional
 - EM4 Removable seats
 - EM5 1400x300mm wheelchair spaces



CINEMA LEVEL



MEZZANINE LEVEL



ROOF LEVEL

FOR CONSTRUCTION 12/05/2014

PROPOSED CINEMAWORLD MULTIPLEX
HUNTINGDON STREET,
ST. NEOTS

LICENSING DRAWINGS

McFARLANE LATTER
 A R C H I T E C T S

3 Clarendon Street, London W1S 2JF
 Tel: 020 7297 5555 Fax: 020 7297 5537
 www.mcfarlanelatter.co.uk

Revisions	Description	Date
A	Issue 1: General Store 2 and Roof	13/09/2014
B	Issue 2: Fire alarm zones and fire doors	24/02/2014
C	Issue 3: Fire alarm zones and fire doors	04/03/2014
D	Issue 4: Fire alarm zones and fire doors	11/03/2014
E	Issue 5: Fire alarm zones and fire doors	17/03/2014